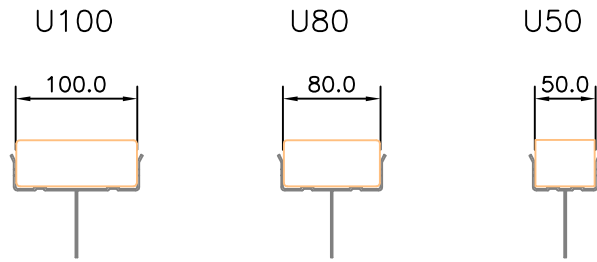
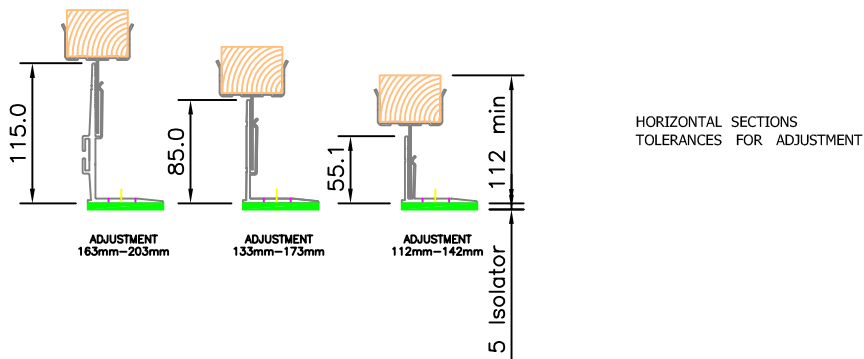
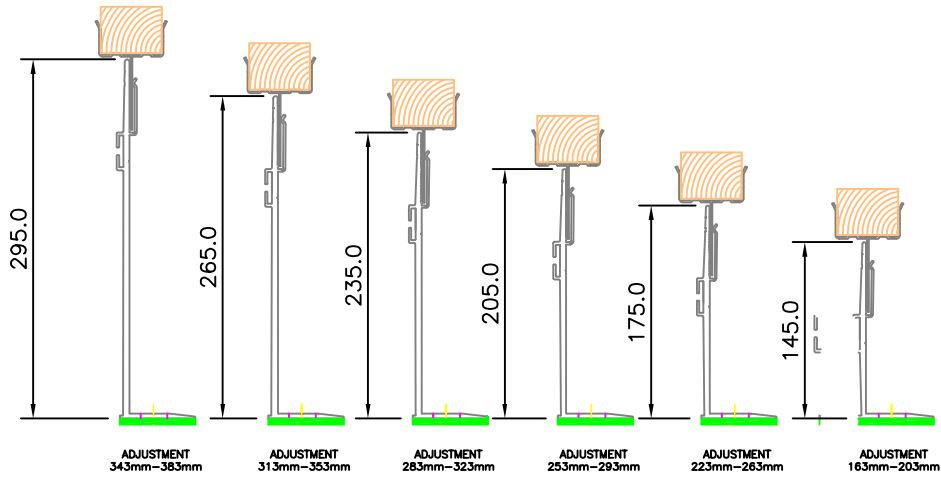


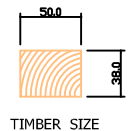
NVELOPE STANDARD CARRIERS + BRACKETS



SINGLE AND DOUBLE SIZES TIMBER CARRIERS (NV6 SYSTEM)



BRACKETS	Adjustment range for each bracket (mm) Based on a 50 x 38 timber	
Nvelope 60	from 112	to 142
Nvelope 90	from 133	to 173
Nvelope 120	from 163	to 203
Nvelope 150	from 193	to 233
Nvelope 180	from 223	to 263
Nvelope 210	from 253	to 293
Nvelope 240	from 283	to 323
Nvelope 270	from 313	to 353
Nvelope 300	from 343	to 383

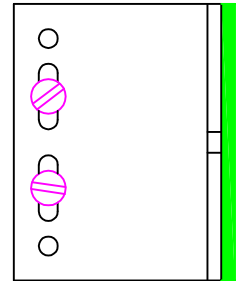
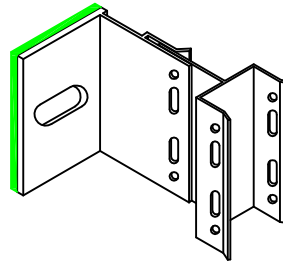
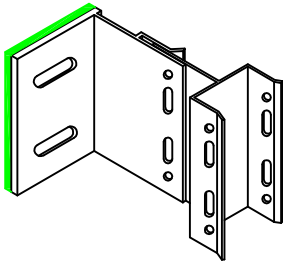
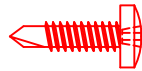


THERMAL ISOLATORS (TO REDUCE COLD BRIDGING)
ARE FITTED TO ALL OF OUR BRACKETS

MOST NVELOPE COMPONENTS ARE EXSTOCK
FOR ORDERS PHONE SALES ON 01707 333 396 OR E-MAIL orders@nvelope.com



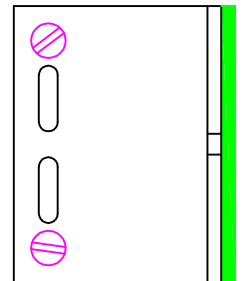
NVELOPE SR2 (4.2 x 16) Stainless
Steel screws **must** be fitted
in either 2 holes fixed point
or 2 slots floating point into carrier



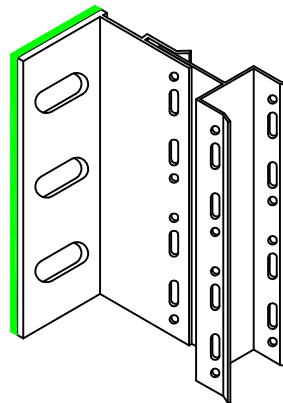
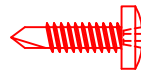
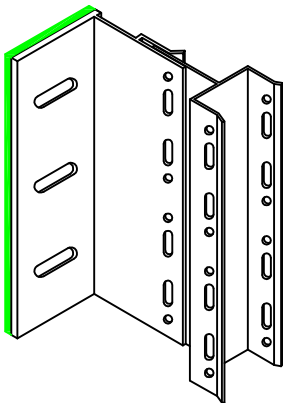
floating point

NVELOPE SR2 (4.2 x 16) Stainless
Steel screws **must** be fitted
in either 4 holes fixed point
or 4 slots floating point into carrier

Refer to NVELOPE Static calculations
prepared for your project or to Structural
Engineers requirements

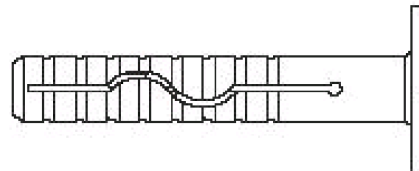
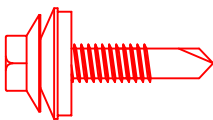


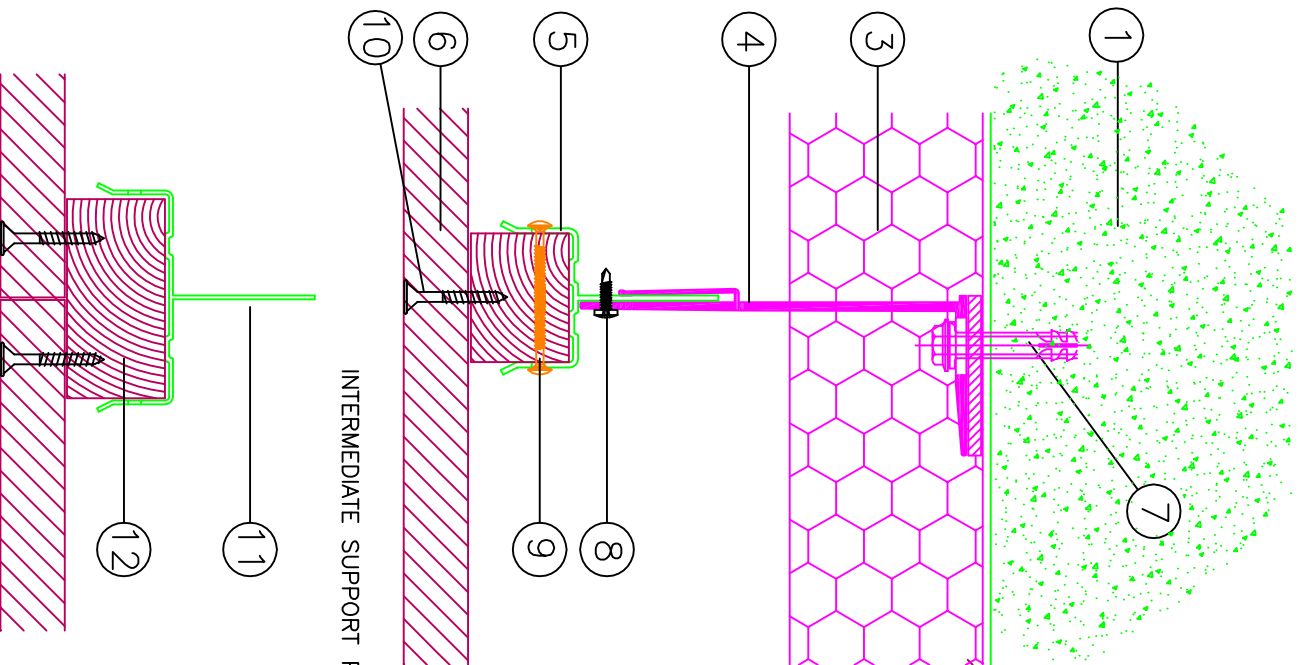
fixed point



6.5mm slots for steel / timber
/SIPS substrate

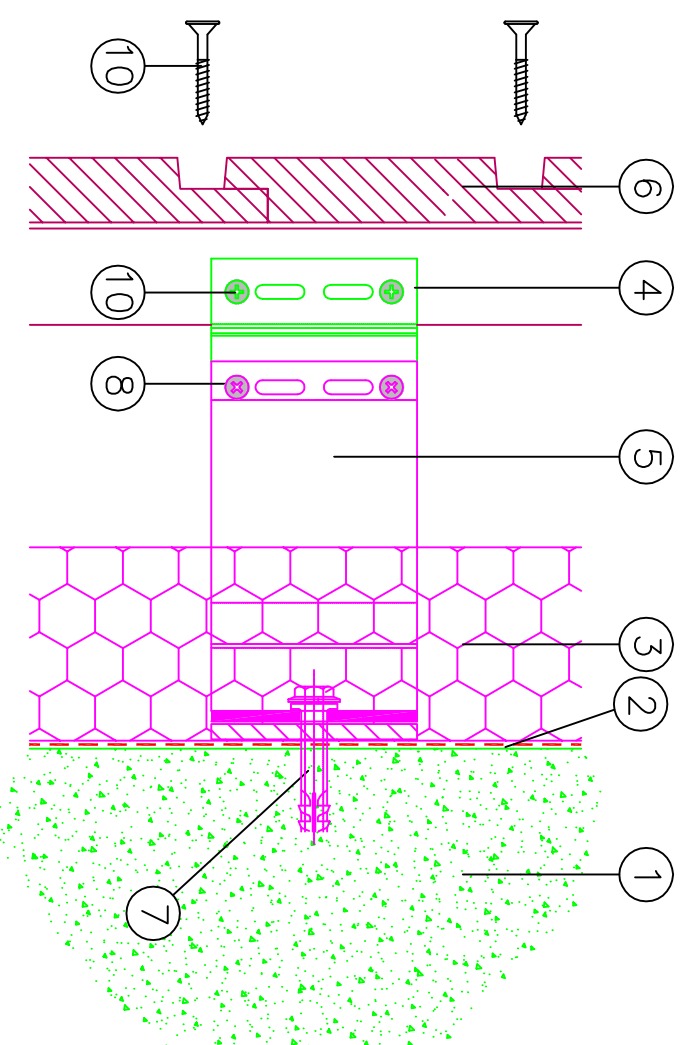
11mm slots for concrete / blockwork
substrate





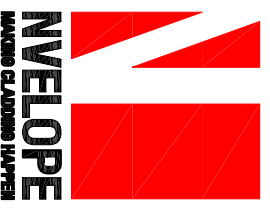
INTERMEDIATE SUPPORT POSITIONS

JOINT SUPPORT POSITIONS

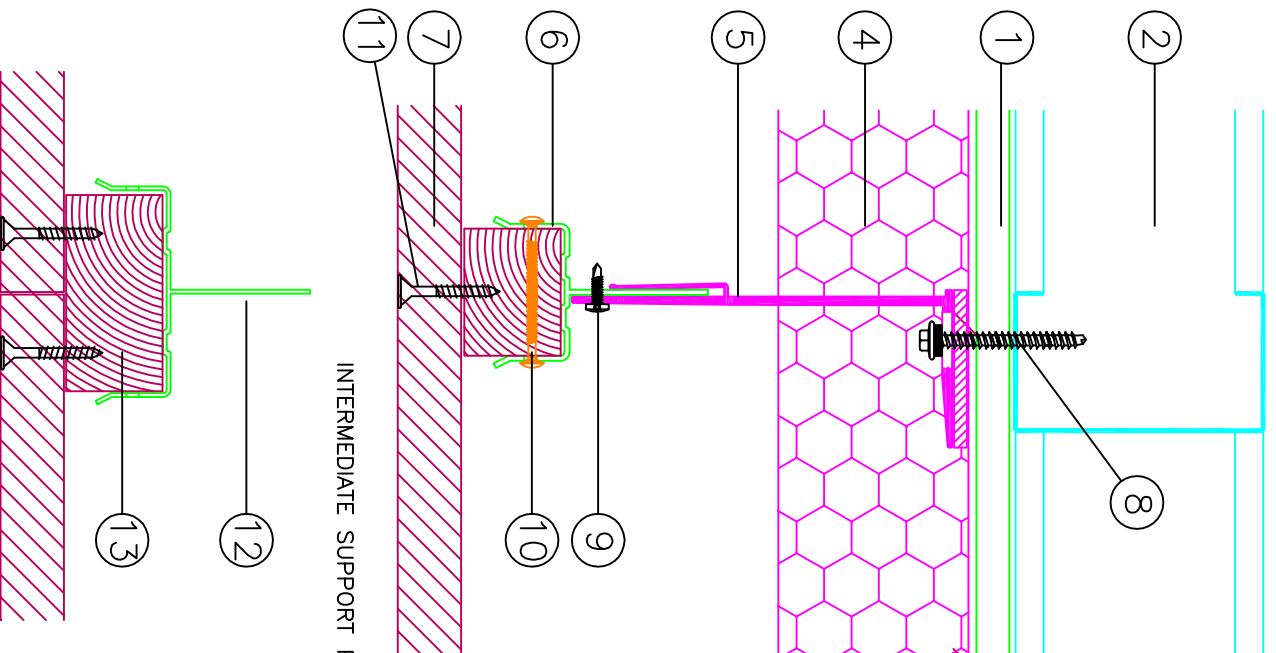


- ① WALL
- ② BREATHER MEMBRANE IF REQUIRED REFER TO MANUFACTURE
- ③ INSULATION TO SUIT BUILDING REQUIREMENTS
- ④ NVELOPE BRACKET NV / 11 slot (SIZE TO SUIT) AND THERMAL ISOLATOR (60mm TO 300mm)
- ⑤ NVELOPE CARRIER 03/050M WITH 50 X 38 TIMBER BATTEN
- ⑥ TIMBER / PLY WOOD CLADDING
- ⑦ SDF/KB/10U/60/80/100 length (DEPENDENT ON CONCRETE/ BLOCKWORK TYPE) & (PULL OUT TEST RESULTS)
- ⑧ SR2 4.2 X 16 S/S SCREW (FIXED POINT AS SHOWN)
- ⑨ 4.8T/25 BATTEN TO CARRIER FIXINGS (STAINLESS STEEL)
- ⑩ TIMBER FIXING SCREWS TO SUIT REQUIREMENTS (by Others)
- ⑪ NVELOPE CARRIER 03/0100L
- ⑫ 100 x 38 TIMBER BATTEN

NV6 SYSTEM ASSEMBLY DRAWING (TO CONCRETE BLOCKWORK)



Tele - +44 (0)1707 333 396
 Fax - +44 (0)1707 333 343

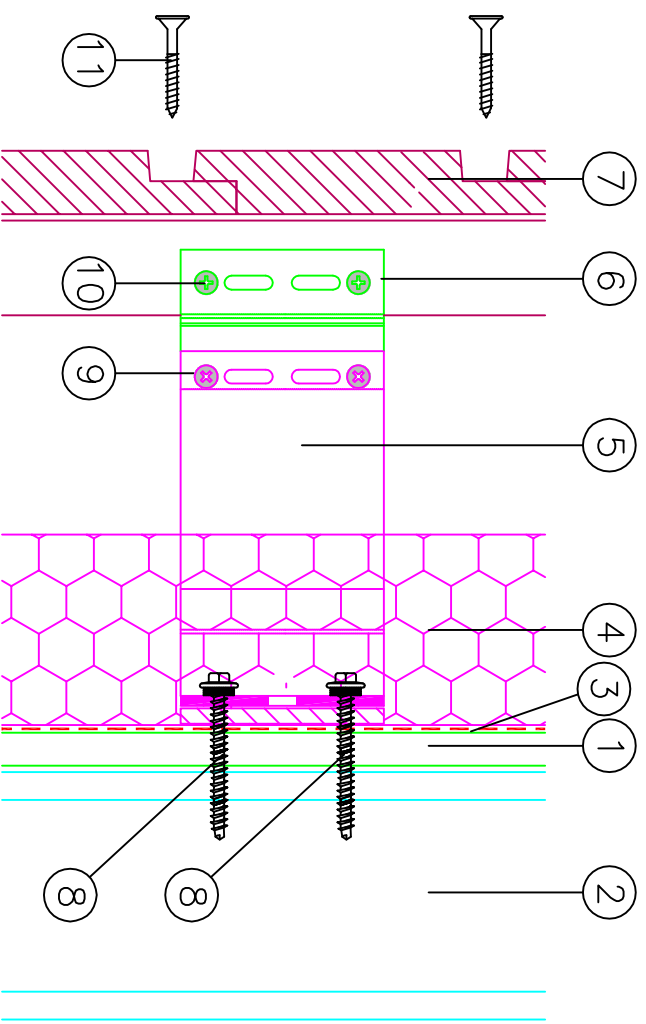


INTERMEDIATE SUPPORT POSITIONS

12

13

JOINT SUPPORT POSITIONS



- ① PLYWOOD/CEMENT BOARD
- ② STEEL FRAMING SYSTEM
- ③ BREATHER MEMBRANE IF REQUIRED REFER TO MANUFACTURE
- ④ INSULATION TO SUIT BUILDING REQUIREMENTS
- ⑤ NVELOPE BRACKET NV / 2 x 6.5 slots (SIZE TO SUIT) AND THERMAL ISOLATOR (60mm to 300mm)
- ⑥ NVELOPE CARRIER 03/050M WITH 50 X 38 TIMBER BATTEN
- ⑦ TIMBER / PLY WOOD CLADDING
- ⑧ JT3-2-6.3 X (38 OR 50) S16 (DEPENDENT ON ITEM 1 THICKNESS)
- ⑨ SR2 4.2 X 16 S/S SCREW (FIXED POINT AS SHOWN)
- ⑩ 4.8T/25 BATTEN TO CARRIER FIXINGS (STAINLESS STEEL)
- ⑪ TIMBER FIXING SCREWS TO SUIT REQUIREMENTS (by Others)
- ⑫ NVELOPE CARRIER 03/0100L
- ⑬ 100 x 38 TIMBER BATTEN

NV6 SYSTEM ASSEMBLY DRAWING (TO STEEL FRAME)

