

NVELOPE Installation Guide NV7.

NV7

Cassette.

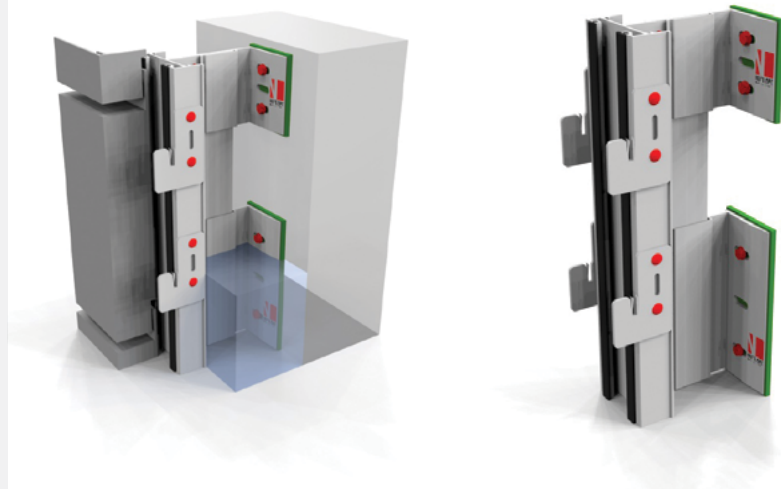
NVELOPE NV7 profiles and components are designed to provide a vertical support framework to 'hook' 3mm or 4mm thick cassette panels to any suitable building façade. These profiles are anchored to the building using a purpose designed bracket that allows final alignment and adjustment.

*For further information,
please see:*

www.nvelope.com

Also download/refer to:

NV1



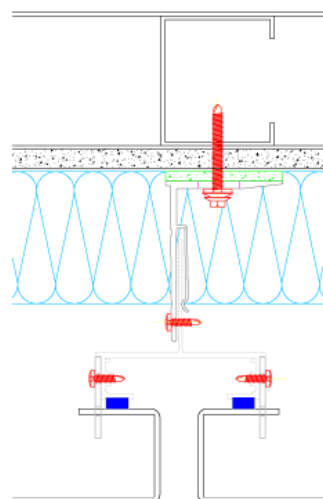
Components

One vertical cassette profile is supplied. The profile is supplied without the foam tape fitted and this should be fitted in position after cutting profiles to length

NVELOPE brackets are supplied in different sizes ranging from 60 – 300mm (see table below for cavity depths that can be formed).

NVELOPE brackets are available with hole-sizes 11 or 6.5 depending on the diameter of the primary anchor/substrate type. If in doubt please contact technical.

Horizontal hangers for the cassette panels are secured in position with two 4.8mm x 19mm self-drilling self-tapping screws.



NVELOPE

Brackets & Primary Fixings.

NV7

Min – Max Adjustment With Isolator

Bracket Size (mm)	Min (mm)	Max (mm)
NVELOPE 60	140	180
NVELOPE 90	170	210
NVELOPE 120	200	240
NVELOPE 150	230	270
NVELOPE 180	260	300
NVELOPE 210	290	330
NVELOPE 240	320	360
NVELOPE 270	350	390
NVELOPE 300	380	420

Min – Max Adjustment Without Isolator

Bracket Size (mm)	Min (mm)	Max (mm)
NVELOPE 60	135	175
NVELOPE 90	165	205
NVELOPE 120	195	235
NVELOPE 150	225	265
NVELOPE 180	255	295
NVELOPE 210	285	325
NVELOPE 240	315	355
NVELOPE 270	345	385
NVELOPE 300	375	415

NVELOPE system brackets are secured directly to a new or existing substrate of concrete, brickwork or blockwork or steel frames. Suitable primary anchors are employed to position the brackets to a pre-determined grid to suit the cassette panel layout.

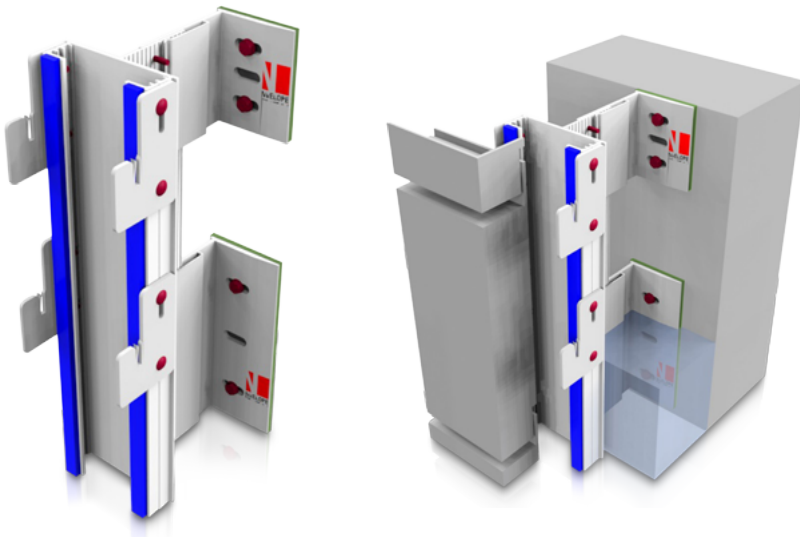
NVELOPE

Vertical Profiles.


 NV7

Vertical Profiles

Once a column of vertical brackets is installed, the cassette profile can be attached at each bracket position. (As the cassette panels will follow any irregularity or miss-alignment of profiles, it is important that time is taken to align/level the framework to a high standard).



- Each cassette profile should be cut to the required length.
- Secure the profile using screws in the 'hole' or 'slots' in the NVELOPE bracket.
- Move the profile into its vertical position – allowing 10mm 'expansion' between profiles.
- The profile can then be eased outwards to form the specified cavity depth.
- Check for line and level – then fix the screws.

Important

As each cassette profile is secured to the NVELOPE bracket ONE connection, near the centre of the profile, **MUST** be connected with TWO SR2 4.2mm x 16mm stainless steel fixings going through the round HOLES. (Fixed point) ALL other bracket connections for the profile should then be made in the TWO SLOTS (sliding point).



NVELOPE

Hangers & Panels.


 NV7

Once all brackets and profiles are installed to an area of cladding, final checks should be carried out:

- On the primary anchor torque settings.
- To the line and level of the NVELOPE profiles in relation to each other.
- To the number of screws and their position in each NVELOPE bracket.

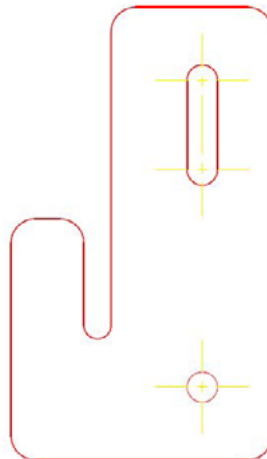
Cassette Hangers

The position of the cassette hangers should align with the fabricated 'hook' cut out slots in the back of the cassette panel.

Horizontal datum lines should be projected across the elevation and the position of the hangers should be marked on both flanges of each vertical cassette profile.

Hangers are then placed in position on the profile and slid to their required position.

A SR2 4.8mm x 19mm screw is used through the hanger through the slot then final alignment can be made with the final screw fixed through the hole to lock the hanger in position.



Cassette Panels

Cassettes should be fabricated to suit the NVELOPE NV7 system designs (see NVELOPE drawings for details).

Importantly the punched 'hanger' cut out and the top and bottom folds are critical to the installation of these cassettes on to NVELOPE NV7 system.

The number of hangers and their vertical position will be specified to suit the size of the cassette panels and the dynamic wind pressures (positive and negative).

Insulation

Where insulation is specified, it should be cut and tightly butted around the brackets and secured with the appropriate fixings. Sufficient insulation fixings should be provided to ensure that the insulation cannot block the ventilated cavity

Cassette Panel Installation (General)

Fold back any protective cover along the four edges of the cassette panel just prior to installing – where possible this protection should remain on the cassette panel surface until an area of panelling has been completed and the possibility of accidental damage is reduced.

- Check profile and hanger positions in relation to actual cassette panel.
- Raise cassette panel and support in vertical position.
- Lower on to hanger plate and check that all 'hook' cut outs have engaged.
- Drill rivet/screw hole in top corners and secure panel in final position.
- Check that the 'hook' cut outs are still engaged on the cassette panel.

NVELOPE Site Checklist.

NV7

Site Checklist

To help with a smooth installation of our rainscreen support systems there are a few things to be taken into account. Please see check list below:



Has a project specific project builder been completed?

➤ www.nvelope.com/project-builder-landing



If you or colleagues are new to our system, have you requested a tool box talk?

➤ www.nvelope.com/nvelope-contact-us



Have you referred to our data sheets and installation guides available on our website?

➤ www.nvelope.com/nvelope-our-downloads-system-guide



Has a successful pull out test been completed?

➤ www.nvelope.com



Once these tasks have been completed and installation starts you can send our team a photo of a selection of brackets for technical to sign off or advise.

➤ sitesupport@nvelope.com

➤ 01707 333 396

NVELOPE Rainscreen Systems Ltd.

Unit 10 Blenheim Court
Brownfields
Welwyn Garden City
Herts
AL7 1AD

T: +44 (0)1707 333 396

www.nvelope.com

We reserve the right to change technical modifications. No responsibility is taken for detail changes or printing mistakes of the details provided.

NV1

Also download/refer to NV1