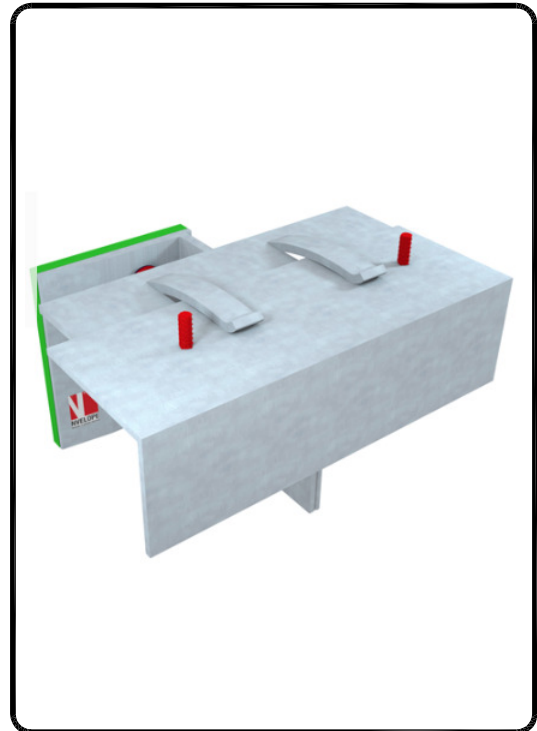


aluminium support system for  
rainscreen cladding

## NVELOPE NH2 SYSTEM

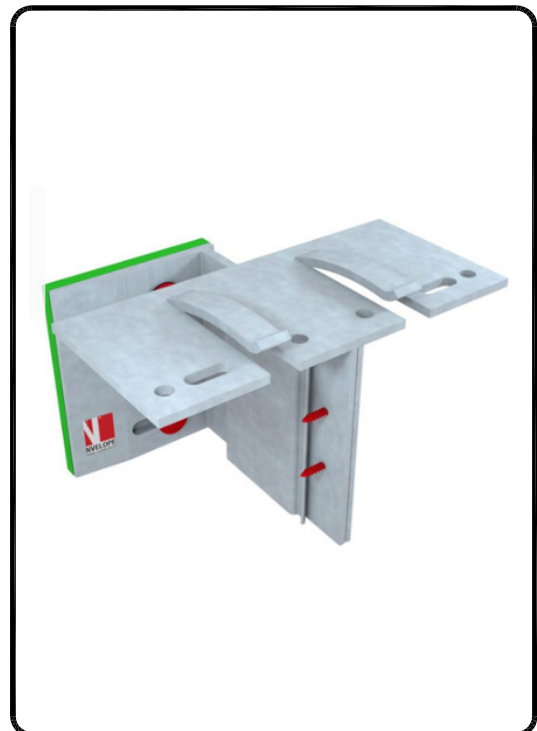


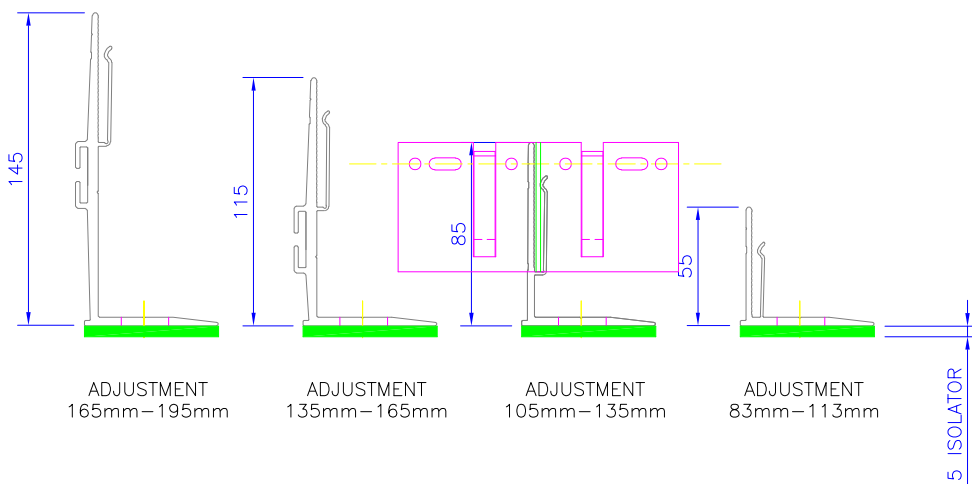
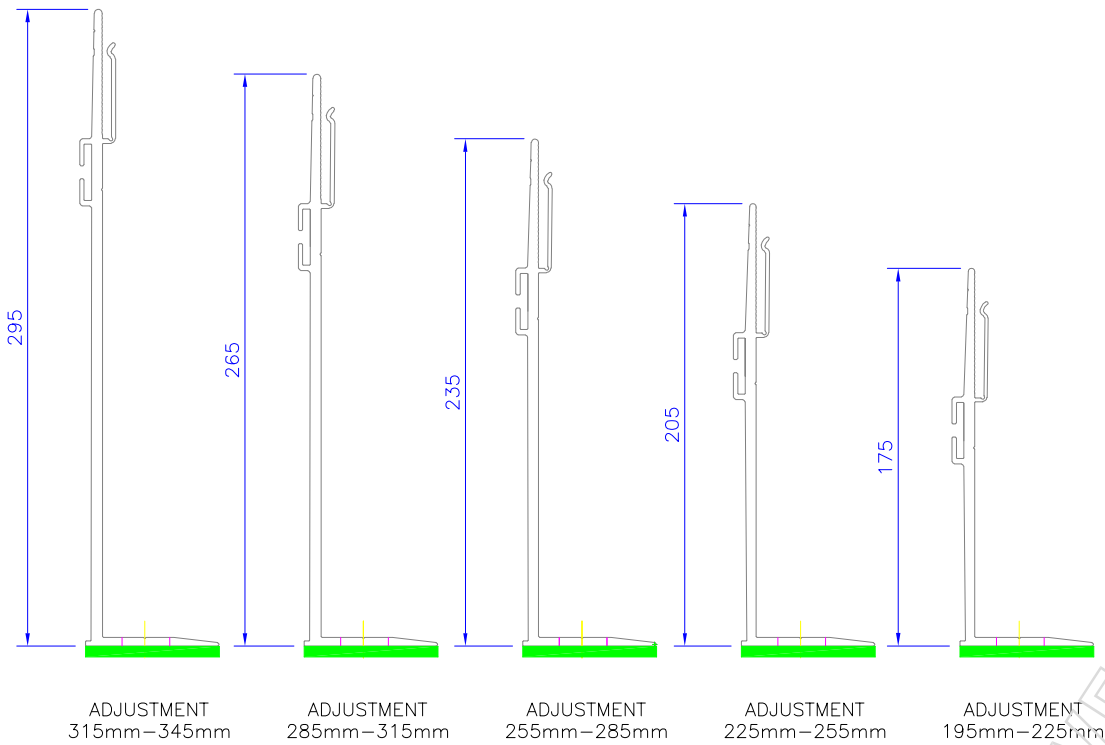
### LEGEND:

- A - Cladding
- B - Cladding-rivet
  
- 1 - SFS steel wall + cement board
- 2 - Nvelope - support bracket
- 3 - Stainless steel fixing
- 4 - T-(L) profile vertical
- 5 - Self drilling stainless steel screw SR2 4.2 x 16
- 7 - Thermal insulation
- 8 - Ventilation Cavity
- 10 - NVELOPE Thermal isolator

### CONTENTS:

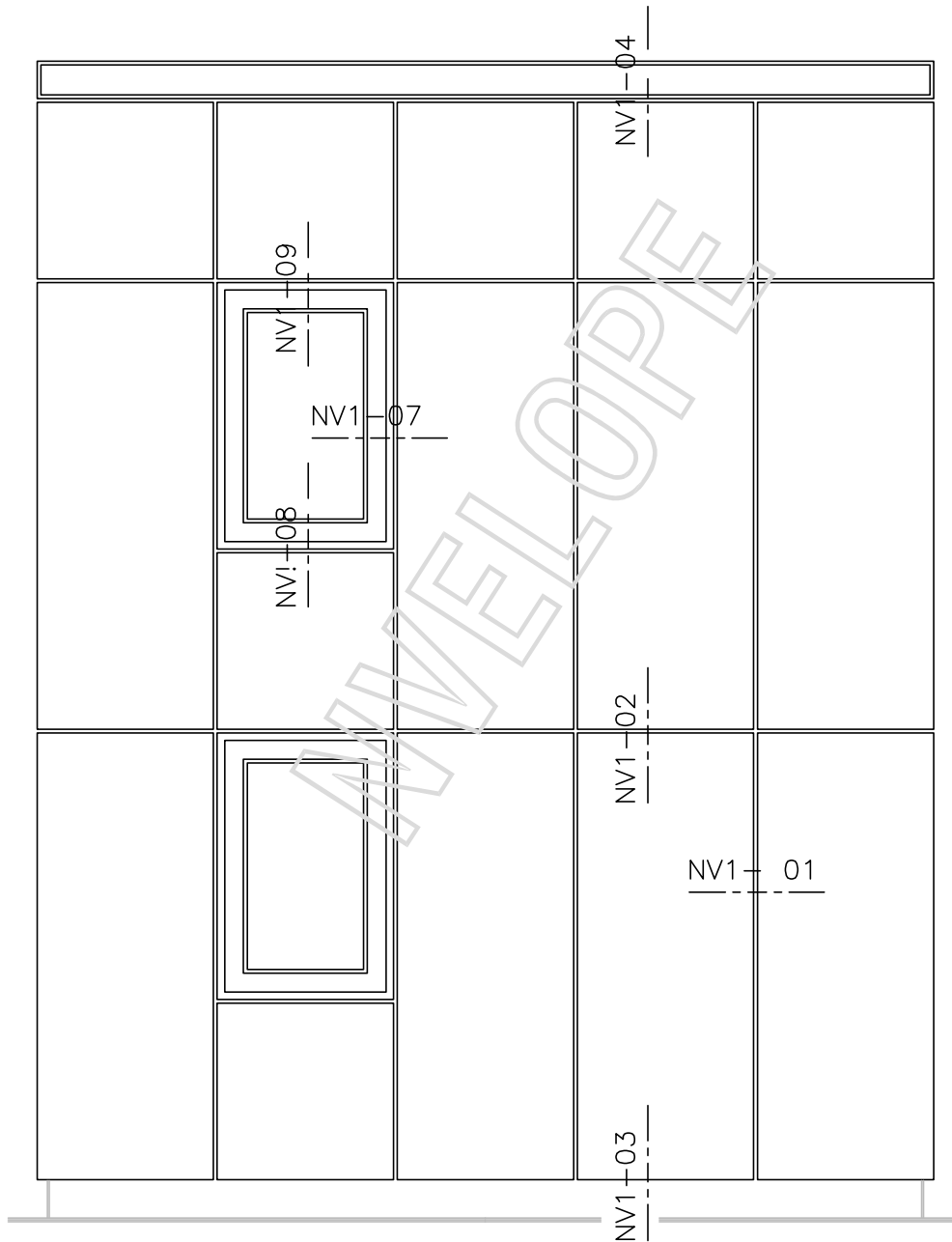
- NV1-00 NVELOPE System detail sheet
- NV1-01 Tolerances for bracket adjustment
- NV1-02 Cladding view locations
- NV1-03 Horizontal section
- NV1-04a Typical section large bracket
- NV1-04b Typical section medium bracket and profile connection
- NV1-05 Vertical section-base of cladding
- NV1-06 Vertical section-top of cladding
- NV1-07 Horizontal section window jamb
- NV1-08 Vertical section window sill
- NV1-09 Vertical section window head
- NV1-10a External corner
- NV1-10b External corner with corner bracket
- NV1-11 Internal corner



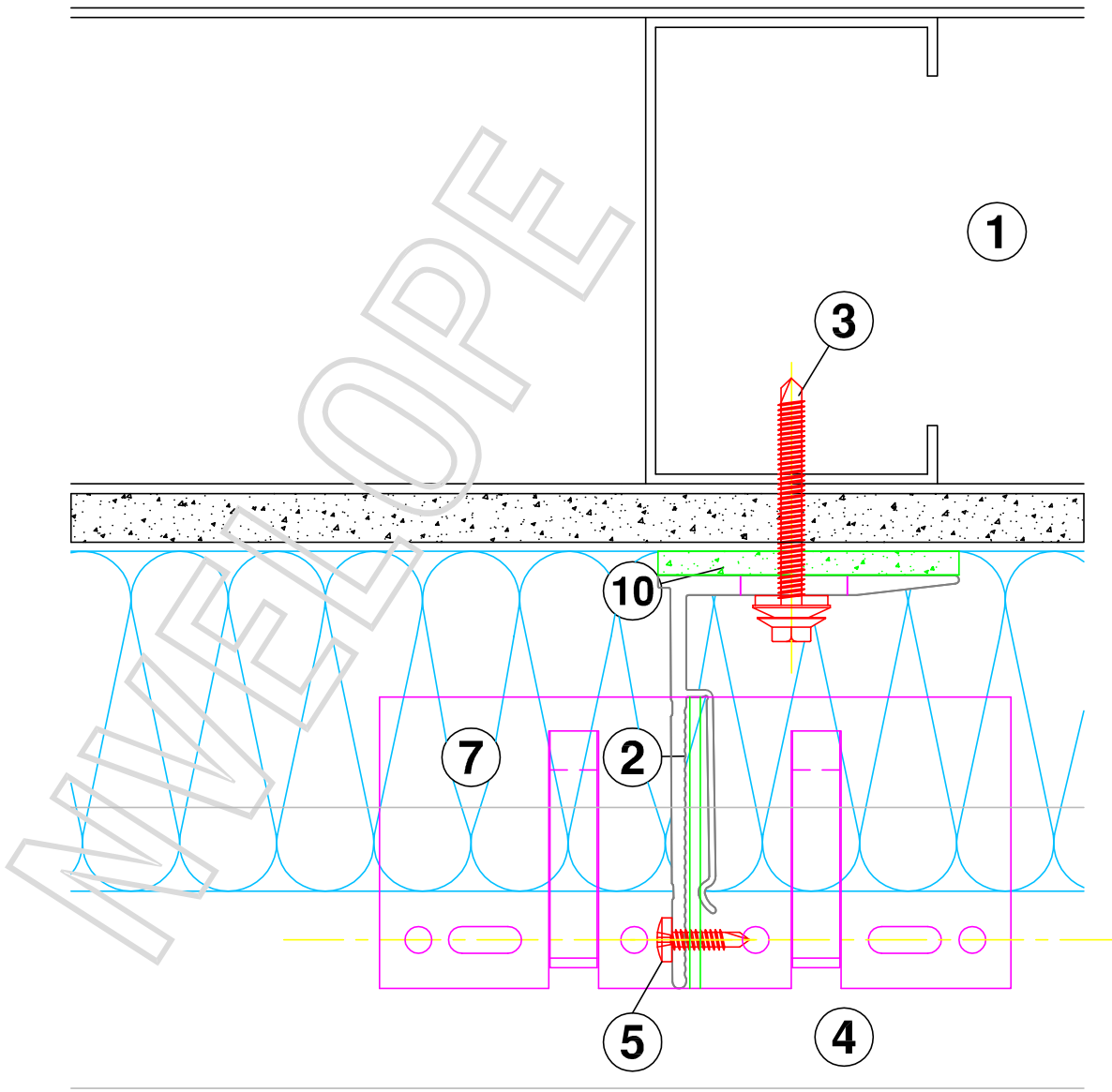


BRACKETS	Adjustment range for each bracket ( mm )	
Nvelope 60	from 83	to 113
Nvelope 90	from 105	to 135
Nvelope 120	from 135	to 165
Nvelope 150	from 165	to 195
Nvelope 180	from 195	to 225
Nvelope 210	from 225	to 255
Nvelope 240	from 255	to 285
Nvelope 270	from 285	to 315
Nvelope 300	from 315	to 345

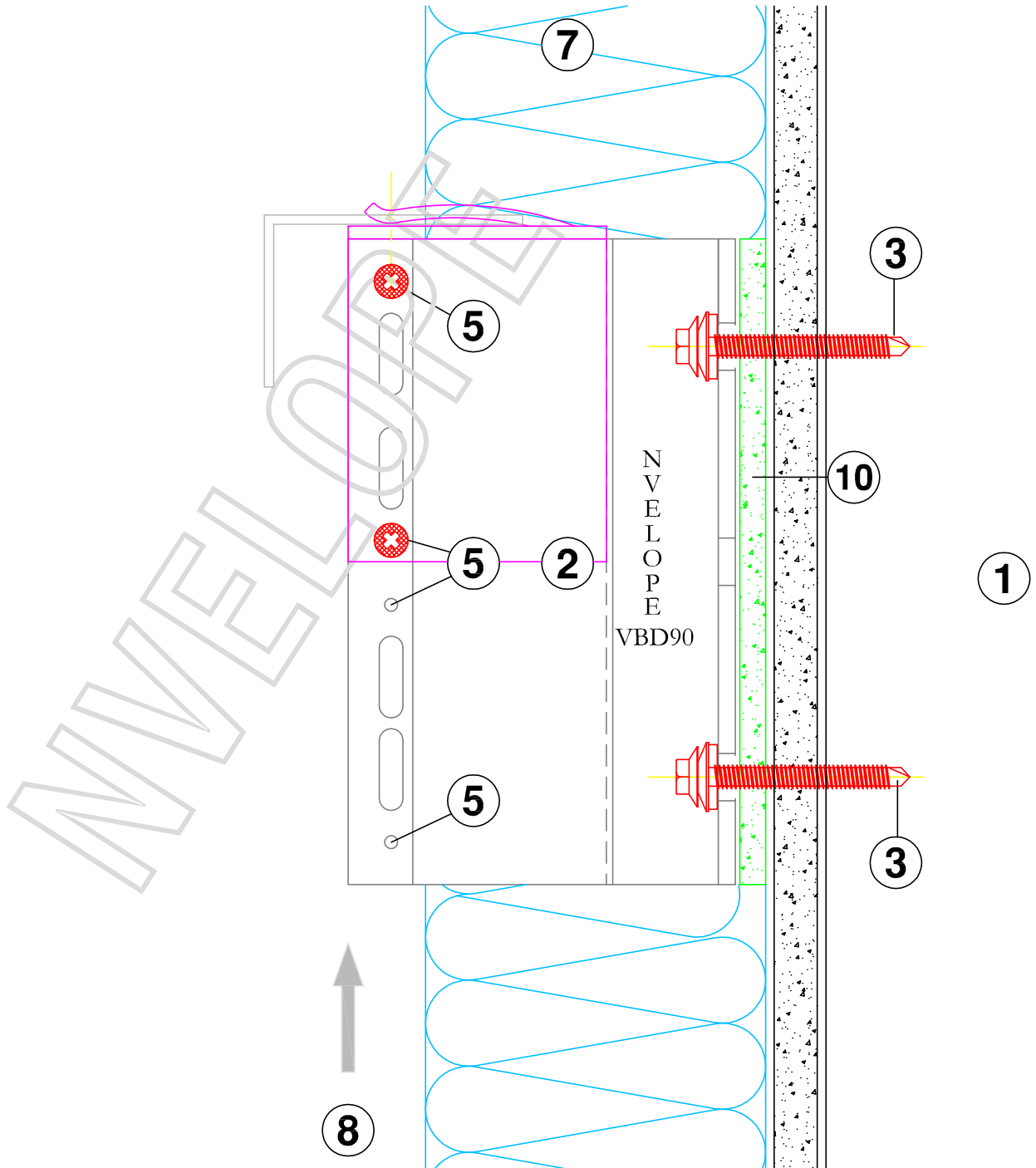
HORIZONTAL SECTIONS  
TOLERANCES FOR ADJUSTMENT



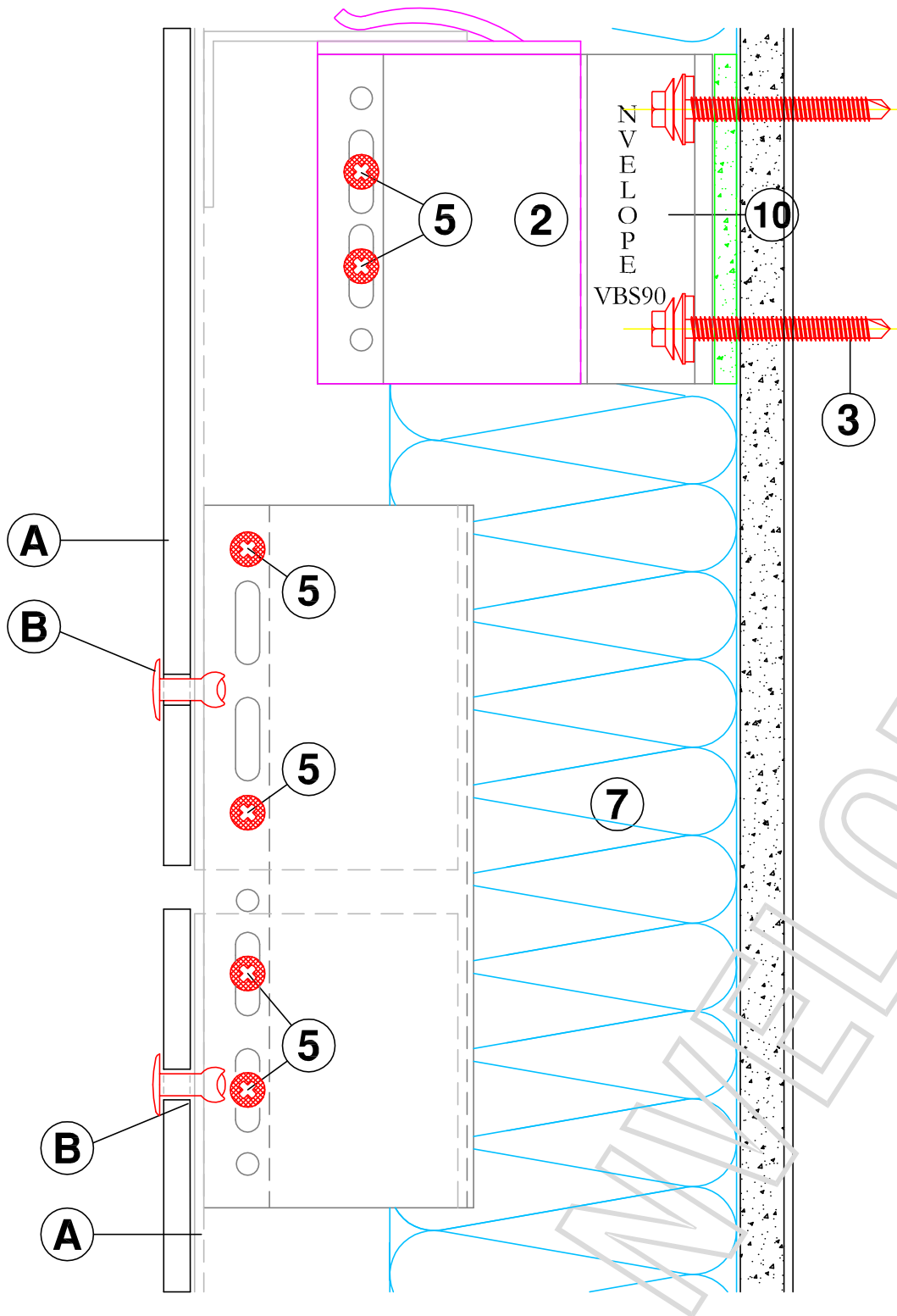
VIEW OF CLADDING - DETAIL LOCATIONS



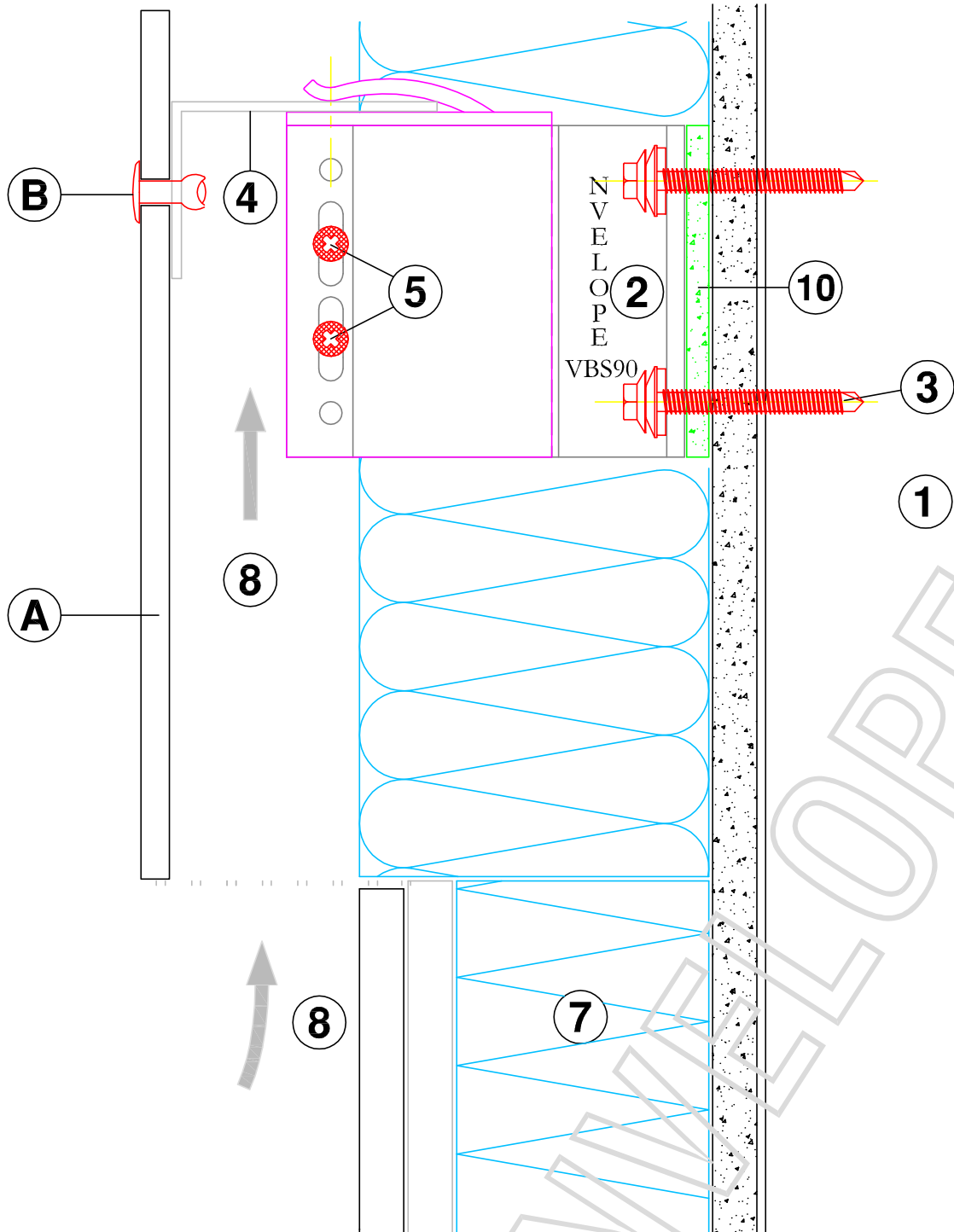
HORIZONTAL SECTION - NVELOPE 90



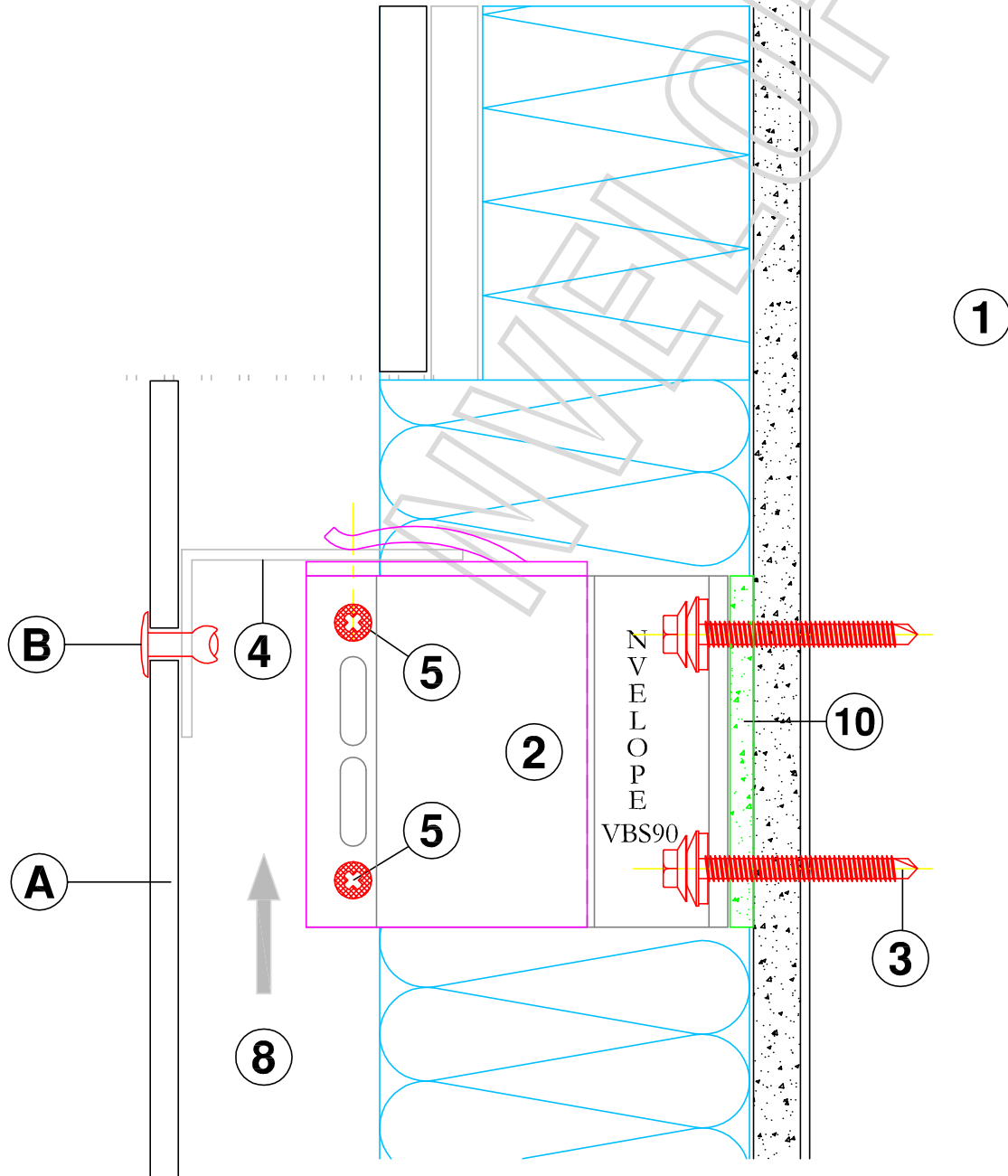
VERTICAL SECTION - NVELOPE L90 FIXED POINT



VERTICAL SECTION - RAIL JOINT OF PROFILE

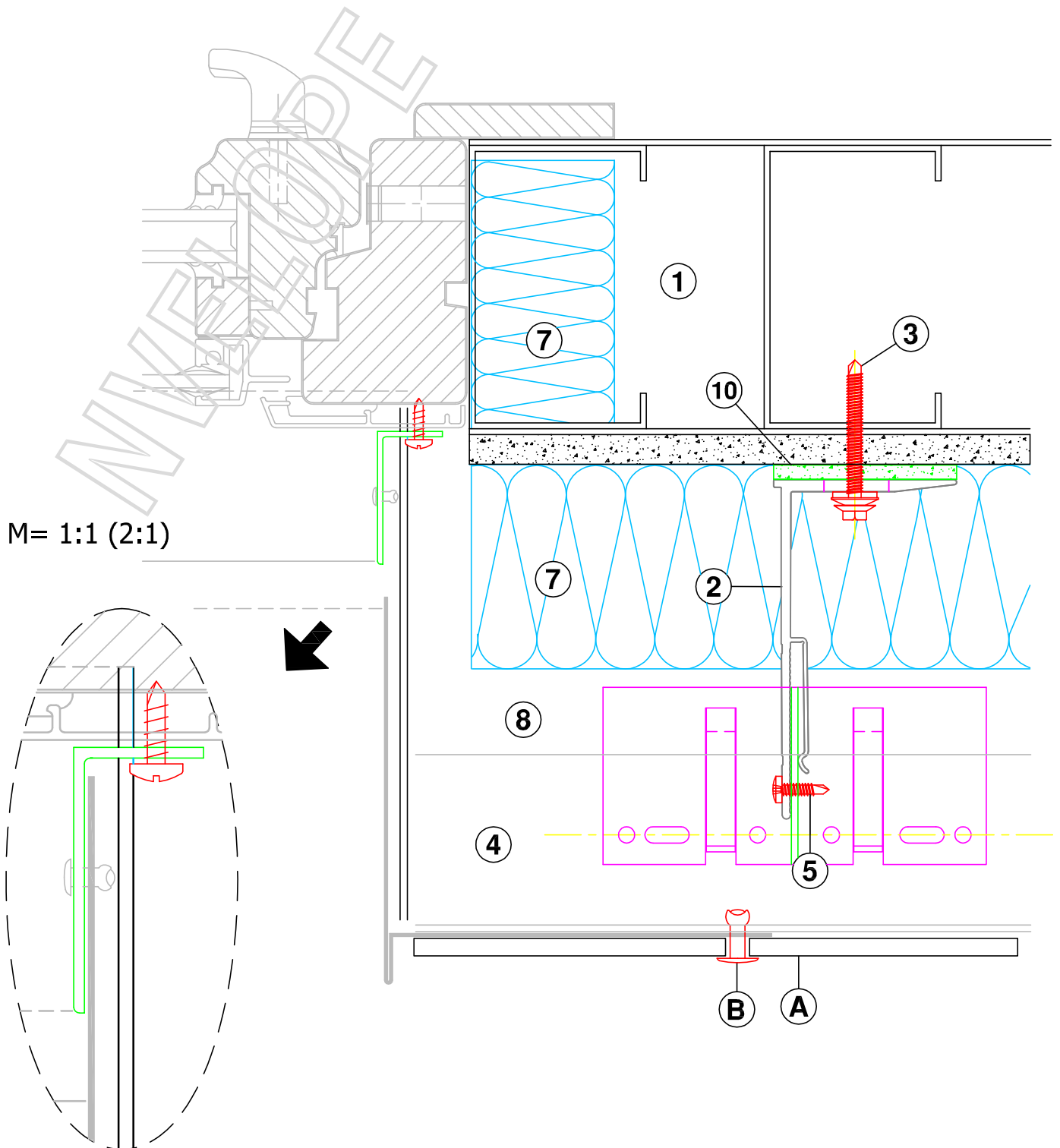


VERTICAL SECTION - BASE OF CLADDING

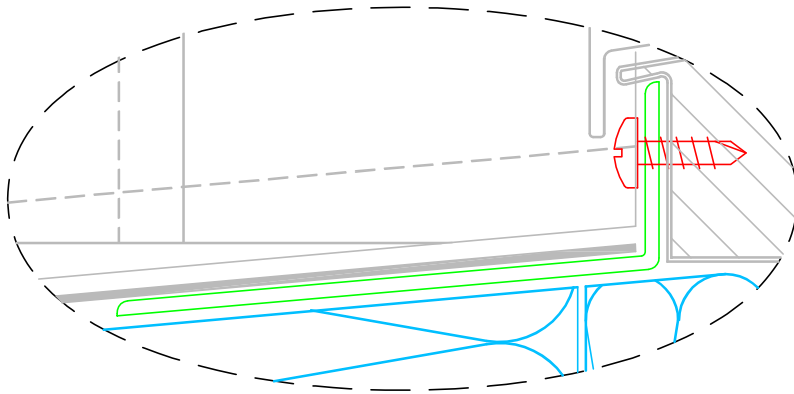


VERTICAL SECTION - TOP OF CLADDING

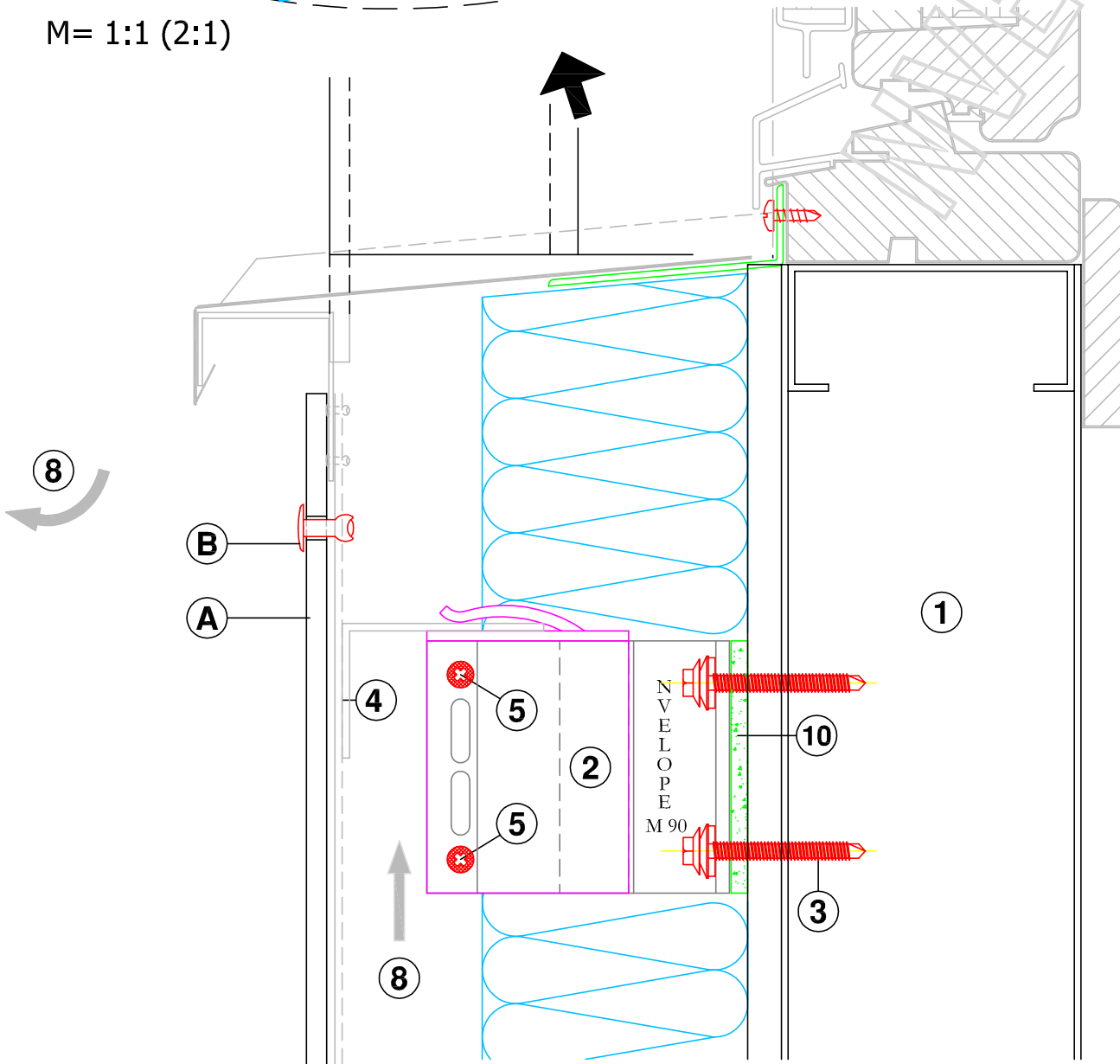




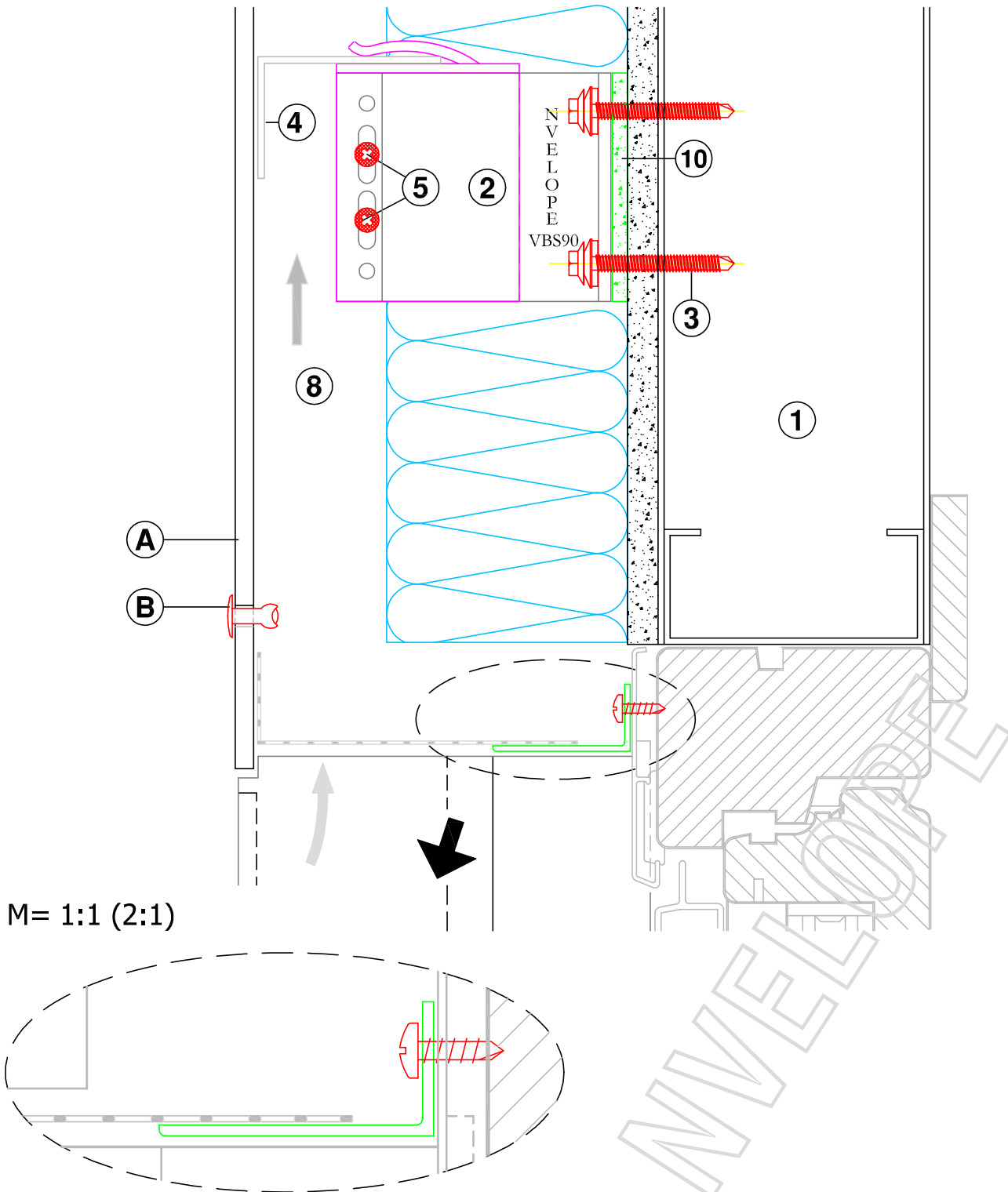
HORIZONTAL SECTION - WINDOW JAMB DETAIL



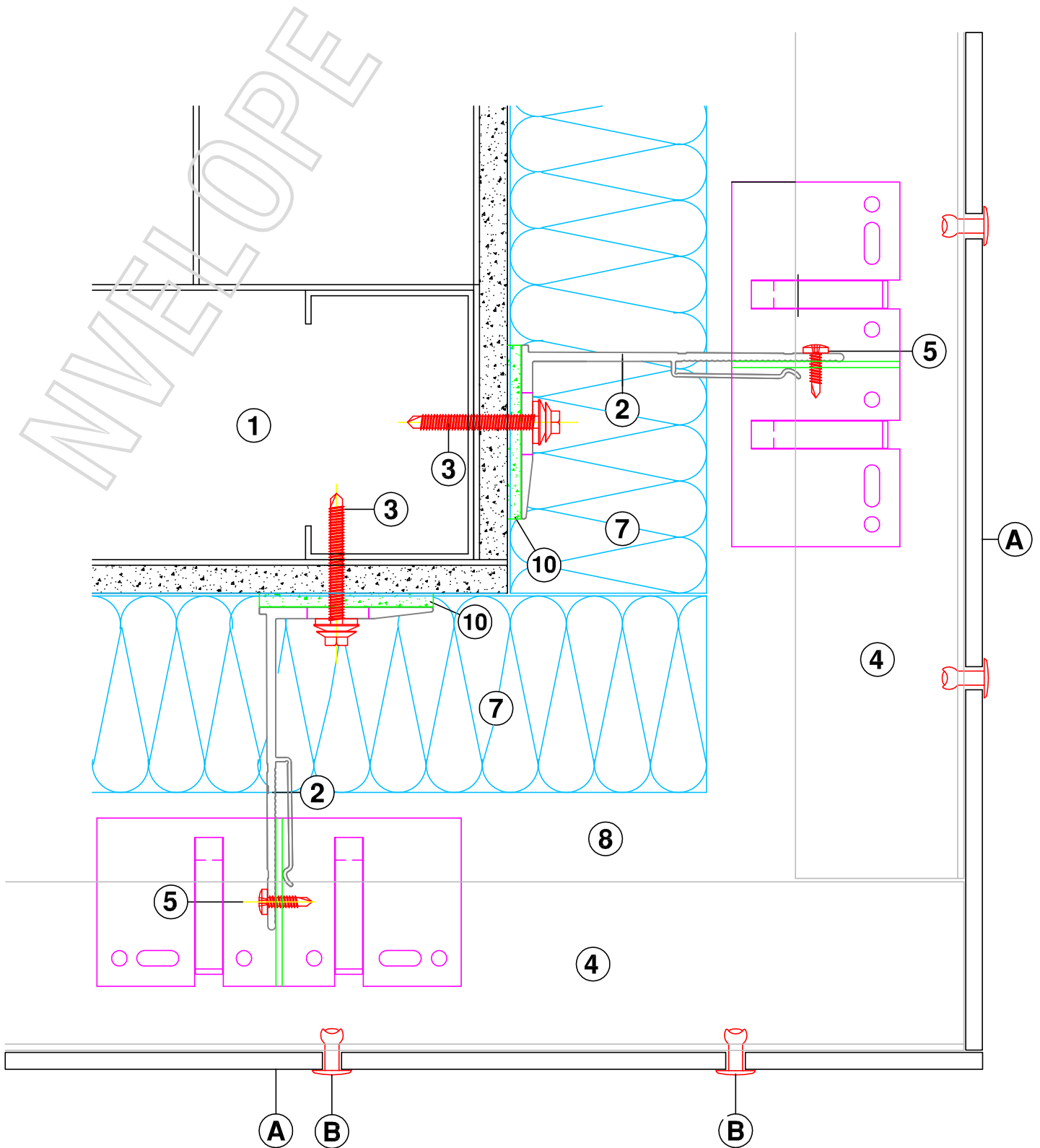
M= 1:1 (2:1)



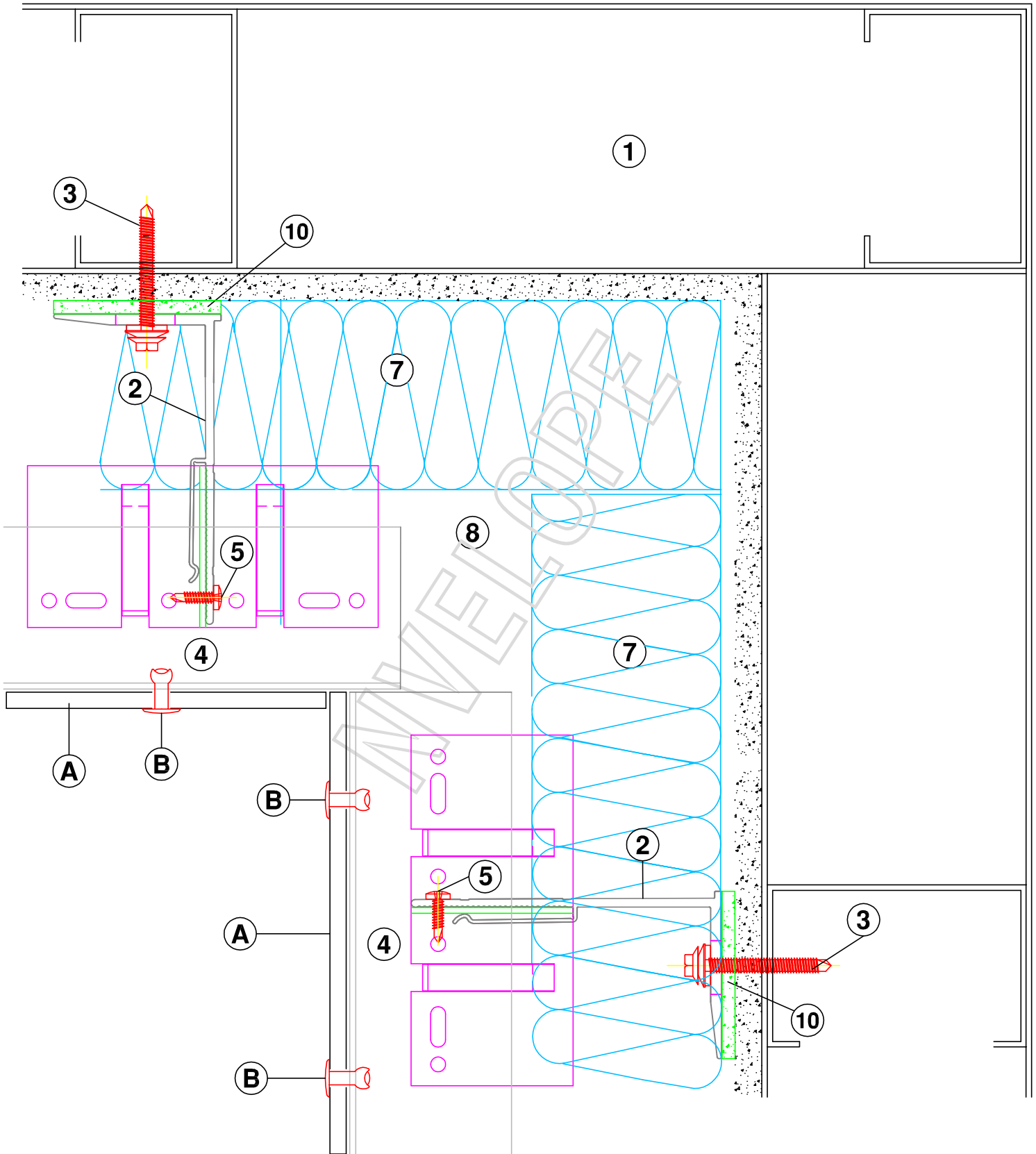
VERTICAL SECTION - WINDOW SILL DETAIL



VERTICAL SECTION - WINDOW HEAD DETAIL



**HORIZONTAL SECTION - EXTERNAL CORNER**



HORIZONTAL SECTION - INTERNAL CORNER