

NVELOPE Installation Guide NVF2F.



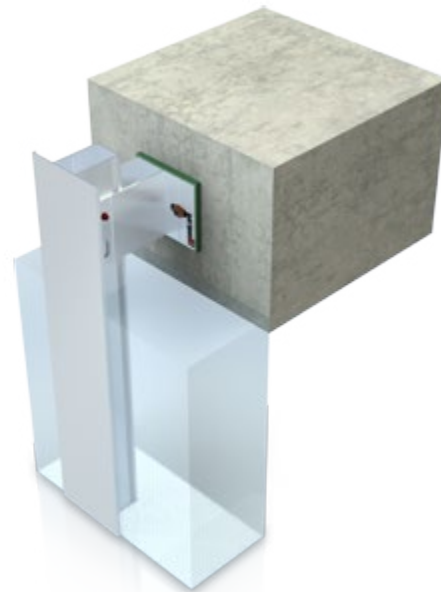
NVELOPE rainscreen cladding brackets and frameworks simplify the complexity of installing façades. NVELOPE systems are designed to provide a vertical support for most façade types.

For further information please see:

www.nvelope.com

Also download/refer to:

NV1



General Description

NVELOPE's F2F system is a purpose-designed system to span floor to floor where the existing wall is non-load bearing.

F2F is a back frame system (bracket and vertical box profiles) suitable for supporting façade panels that require face fixing, adhesive or an add-on system, such as NV3 horizontal secret fix systems.

Range of Adjustment

NVELOPE F2F system has a range of adjustment of 79mm to 277mm + 5mm if fitted with isolators.

*Minimum with primary fixing installed in bracket well = 94mm.
All dims are from heel of brackets + 5mm with isolator installed.

F2F System Range of Adjustment

Bracket Size	Min (mm)	Max (mm)
Small*	79	127
Medium	125	177
Large	175	227
Extra Large	225	277

NVELOPE Installation.



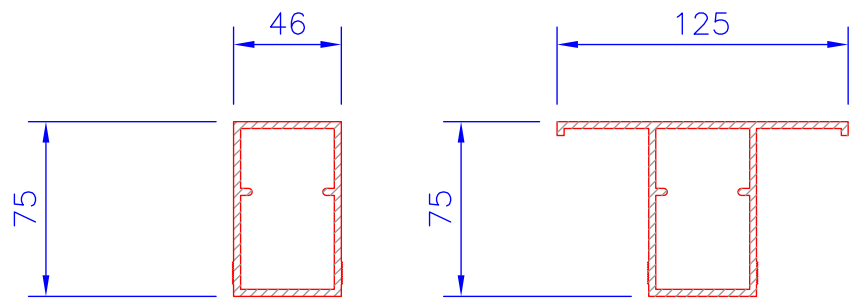
Primary Fixings

Primary fixings are to be determined by site pull-out. Each of the brackets are punched with 2 x 12.5mm slots. The fixings should be A4 stainless steel. Depth of hole and length of fastener to be determined by site pull out.

NVELOPE is happy to arrange site pull-out tests on your behalf.

Vertical Rails

NVELOPE F2F system has two type of rails — a box section and a 'T' box profile.



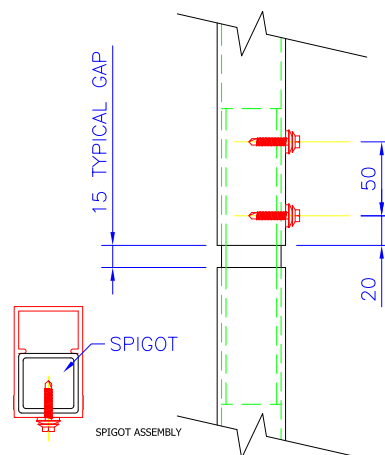
BOX PROFILE

T BOX PROFILE

System Installation

NVELOPE F2F brackets are fixed with suitable primary fixings to each floor slab edge, in accordance with structural calculations to suit wind load, weight and architectural intent. The box or T box is then fitted, spanning either 1 floor span or 2 floor spans, dependent on calculations.

An expansion gap should be left between box profiles and a spigot used to connect each rail. This should be fitted between the 2 profiles, but only fixed to one to allow movement. If required we can produce cross rails horizontal to support window pods. These are manufactured with welded end plates to suit build-up of system.



When the box profiles are aligned and level at each bracket position, the box profile needs to be drilled through to receive a M8 stainless steel bolt, complete with Nylock nut.

This will go through the hole in the bracket of a fixed point or through the slot if a sliding point.

Ensure all fixings of primary and rail connections are tight.

NVELOPE Installation.



NVELOPE Rainscreen Systems Ltd

Unit 10 Blenheim Court
Brownfields
Welwyn Garden City
Herts
AL7 1AD

T: +44 (0)1707 333 396
F: +44 (0)1707 333 343

www.nvelope.com

We reserve the right to change technical modifications. No responsibility is taken for detail changes or printing mistakes of the details provided.

Insulation

When insulation is specified, it should be cut, tightly butted around the brackets and secured with appropriate fixings. Sufficient insulation fixings should be provided to ensure that the insulation cannot block the ventilation cavity.

Panel Installation (General)

- Check profile positions in relation to actual panel positions and panel joints.
- Raise the panel and support in position.
- Adjust level and height of panel before fitting next panel.
- Repeated on next panels.
- Panel joints should follow the manufacturer's recommendations re joint gaps, horizontal and vertical.

Site Checklist

To help with a smooth installation of our rainscreen support systems there are a few things to be taken into account.

Please see check list below:



Has a project specific project builder been completed?

➤ www.nvelope.com/project-builder-landing



If you or colleagues are new to our system, have you requested a tool box talk?

➤ www.nvelope.com/nvelope-contact-us



Have you referred to our data sheets and installation guides available on our website?

➤ www.nvelope.com/nvelope-our-downloads-system-guide



Has a successful pull out test been completed?

➤ www.nvelope.com



Once these tasks have been completed and installation starts you can send our team a photo of a selection of brackets for technical to sign off or advise.

➤ sitesupport@nvelope.com

➤ 01707 333 396